

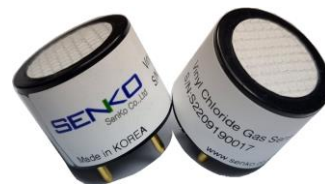
Vinyl Chloride Gas Sensor

Product Data Sheet
Model #SS11VC

2023. Ver 1.0

Applications

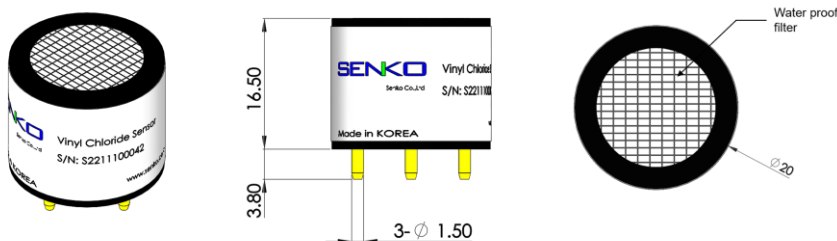
- Ideal for fixed instruments
- Industrial safety (chemical plants, factories for PVC manufacturing)
- Ambient air and water condition monitoring



Specifications

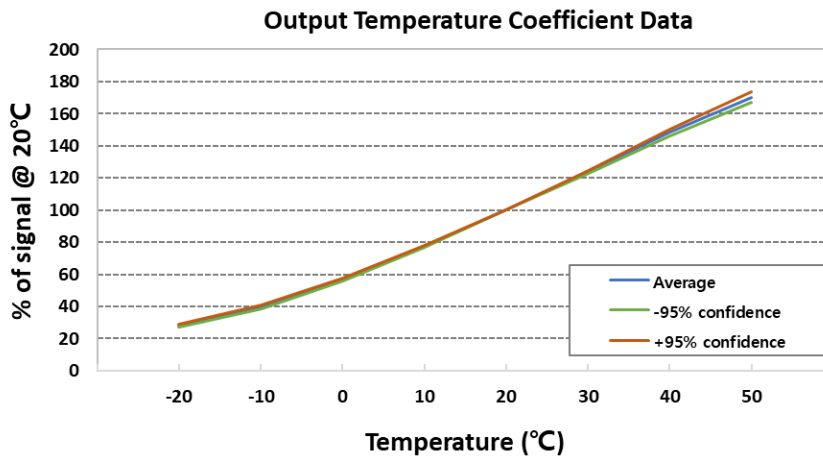
Performance Characteristics	
Output Signal	450±100 nA /ppm
Typical Baseline Range (pure air)	≤ ±1 ppm C ₂ H ₃ Cl equivalent
T90 Response Time	<70 seconds
Measurement Range	0-20 ppm
Maximum Overload	50 ppm
Linearity	Linear
Repeatability	≤ ±5% of signal
Recommended Load Resistor	10 ohms
Resolution (Electronics Dependent)	≤0.5 ppm typical
Bias Voltage	+300mV
Environmental	
Temperature Range Continuous	-20°C to +50°C
Pressure Range	800 to 1200 mbar
Operating Humidity Range	15% to 90% Rh
Life Time	
Long Term Output Drift	≤20% per annum
Recommended Storage Temp	0°C to 20°C
Expected Operating Life	≥24 months in air
Standard Warranty	24 months from date of dispatch
Intrinsic Safety Data	
Maximum at 50ppm	0.2mA
Maximum o/c Voltage	<1.0V
Maximum s/c Current	<0.1A

Dimension



Due to ongoing research and product improvement, specifications are subject to change without notice

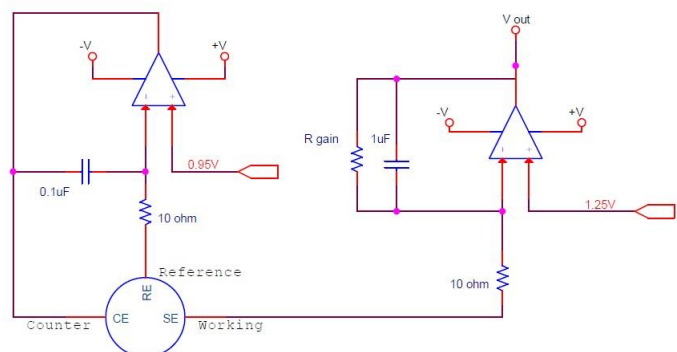
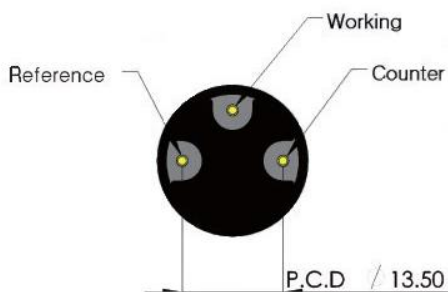
Temperature effects



Cross sensitivity

Gas	Concentration [ppm]	Reading [ppm]
Vinyl chloride	10	10
Carbon Monoxide	100	45
Hydrogen	500	<1
Ammonia	100	0
Ethanol	207	200
Isopropyl alcohol	20	11
Iso-Butylene	100	100

Standard operating circuit



Due to ongoing research and product improvement, specifications are subject to change without notice